

It prepares the eclectic tip unit which can be chosen according to the purpose.

It assorts the various tip units which can do the exposures which are effective for the various loci.

The exposure

The exposure example of the ■SG2 unit



The exposure example of the ■PB2 unit



The exposure example of the ■C2 unit



The standard unit

The ●SG1 type (for the single) ●SG2 type (For the double) The ●PB1 type (for the single) ●PB2 type (For the double) The ●C1 type (For the single) The ●C2 type (For the double) ● The hook type tip unit folder



The exposure caliber : The 14-mm major axis, the exposure caliber : The 14-mm major axis, 7 mm of for every 7 mm (the ellipse) of minoraxes (The ellipse) The exposure caliber : 10 mm The exposure caliber : 9 mm The exposure caliber : 66 mm The exposure caliber : 38 mm The tip unit and the fiber can be stored.

Use for an exposure to the < cervical-part and so on. > Use when doing a < hand exposure. > Use for an exposure to the < wide range. >

The option unit

The ●Y1 type (For the single) The ●Y2 type (For the double) The ●PS1 type (For the single) The ●PS2 type (For the double) ● The special tray



The exposure caliber : 30 mm The exposure caliber : 22 mm The exposure caliber : 7 mm The exposure caliber : 7 mm It is the special tray which can be installed in the wagon berth being low.

Use for an exposure to the < pterygoid-muscle and so on. > Use when doing a < hand exposure. >

■ The specification

Type1/the rated voltage : 100 V of AC, the power supply frequency : 50/60 Hz, the power consumption : 220 VA, the oscillation wave length 1.6 μm of 0.6 μm ˜:The light-source : 150 W of special lamps, the weight : 32 kg, the size : The 1,445-mm width 495 × depth 435 × height

Type2/the rated voltage : 100 V of AC, the power supply frequency : 50/60 Hz, the power consumption : 220 VA, the oscillation wave length 1.6 μm of 0.6 μm ˜:The light-source : 150 W of special lamps, the weight : 35 kg, the size : The 1,445-mm width 495 × depth 435 × height

■ The calculation medical

The manipulation, the anti-inflammation pain-relief and so on, (The therapeutics by the armamentarium and so on) : 35

dermatology actinotherapies (The infrared light or the actinotherapy) : 45

■ The medical equipment authentication number 221AGBZX00064000

The attention about the safety



- Before use, often use "the package-insert" "the instruction manual" right on the Scale reading.
- Check equipment regularly.
- This equipment sometimes needs an electric-work and so on. Consult a buying store or our company's office. It sometimes causes the electric shock and the fire when there is lack in the construction.

Tokyo
ken

SUPER LIZER PX

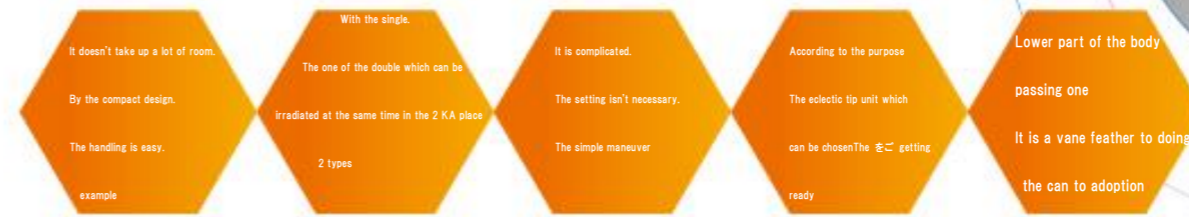
The pulse irradiation which is the first time in the infrared rays therapy



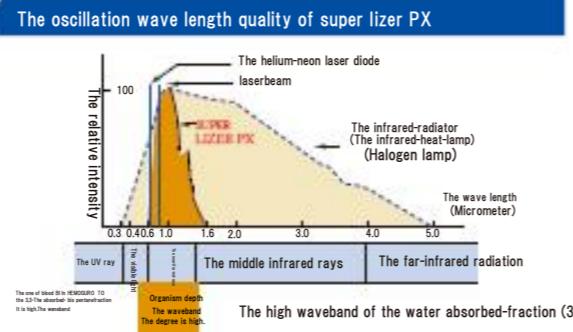
The pulse is a lingua high-power to being possible. It is possible to do an actinotherapy more safely to the depth.



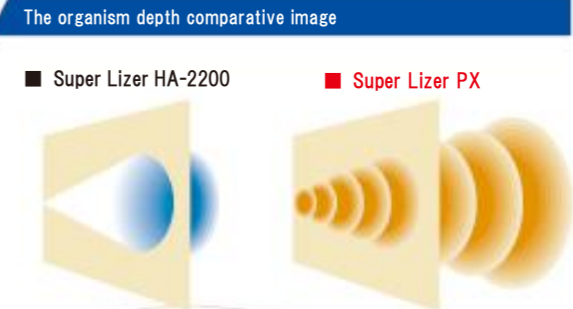
The light-therapy-equipment where "the super lizer" can irradiate the near-ifra-red-rays (1.6 μ m of 0.6 μ m \sim) of the highest organism depth waveband in spot-shape at the high-power in the light. The effect is admitted in each family including the pain-clinic and is widely used on the medical care scene. Then, evolution type "super lizer PX" of the light-therapy-equipment to have made the higher safety be compatible with the therapeutic effect which is more excellent now with the adoption of the highpower pulse irradiation was born.



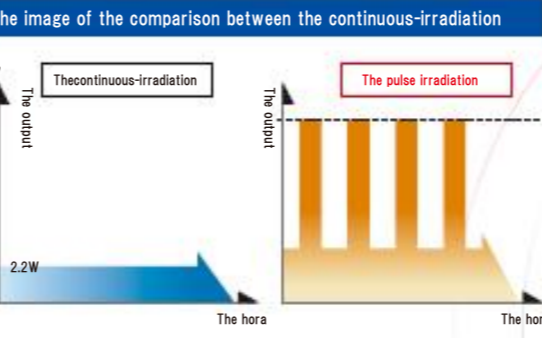
1 The high organism depth complex wave length
 "The super lizer" is doing an ideal mechanism as the light-therapy-equipment which took out only a high organism depth waveband (0.6 μ m \sim 1.6 μ m) with the optics filter. The organism effect which reaches the deep area surely because it is not a single wave length like a diode laserbeam and it is the complex wave length which has a wide waveband and modifies more than one waveband with the pleasant sense-of-heat can look forward to it.



2 It realizes a high-power by the pulse irradiation.
 "Super Lizer PX" realized the high-power which exceeds 2.2 conventional W remarkably by adopting a pulse irradiation. It is higher in organism depth with this. It reduces a treatment time. Moreover, for the exposure range to spread at the high-power, it became possible to do an infrared rays therapy more easily.



3 The safety, too, improves compared with the continuous-irradiation.
 However, in the maximum output, at conventional 2.2-W "the super lizer", there were concerns of the safety aspect which accompanies a cutis differential temperature in the temperature rise test in the continuous-irradiation. Therefore, it was doing the security measures of the safe program and so on but "super lizer PX" doesn't have a worry with the cutis temperature which rises in above the hyperthermia sense which is pleasant for the pulse irradiation. Also, it prepares in case of the emergency and it has an automatic-equipment within.



4 Arm lie variable action built-in
 The arm position can be installed in the lower part frame by the displacement. The exposure to the cruris parts such as the lower back and the geniculum became easy with this action. In the flexible arm excursion, it is possible to irradiate without the psychological stress to the inferior-limb ending. It is possible to do an exposure in the wear locus of the patient, too, easily.



The hook type tip unit folder
 All units can be stored. Moreover, it secured the space of the placing, too, in the temporariness of the probe.



The improvement of the visibility
 As for the operating panel, the light white, the setting dial which has a cool sense adopted light blue.