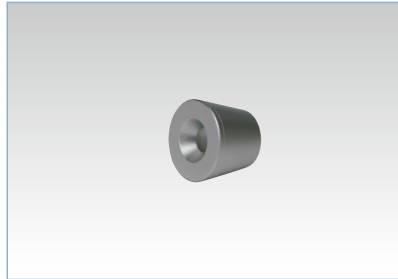


## Hyper 5000 A2J standard accessories

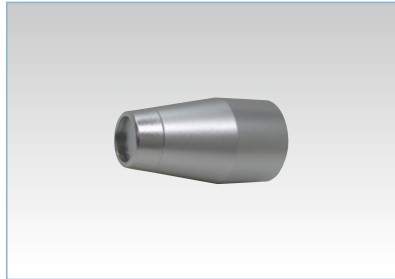
### H-C2 type unit

A perfect unit for high-power irradiation



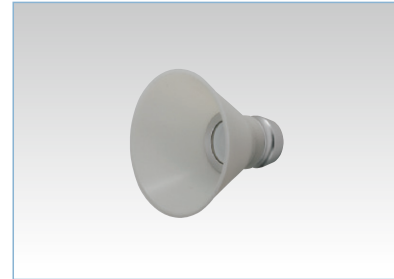
### B type unit

It allows deeper penetration into body tissues for focused irradiation into deep tissues.



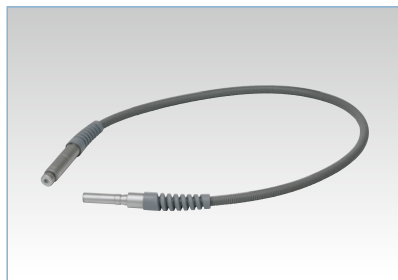
### C type unit

This can be used for wider lesions.



### Fiber-optic light guide

Standard fiber with a convenient length



### Flexible arm

This helps efficient fixed field irradiation into any body parts.



### Carrying case

Useful carrying case when making house calls



### H-M unit (optional)

For irradiation into smaller lesions



### Specifications

Rated voltage: AC 100 V, power frequency: 50/60 Hz, power consumption: 220 VA, timer function: 1-20 min, protection class: class I medical device, degree of protection: BF applied part, wavelength range of light output: 0.6-1.8  $\mu$ m, light source: super iodine lamp, dimension of main body (without protruding parts): W 245 x D 387 x H 160 mm, weight: 4.6 kg, Medical device approval number: 22 DOUYAKU 2117



# —SUPER LIZER— Hyper 5000 A2J

Enhanced power has advanced light irradiation treatment into a new realm of veterinary medicine.



### Tokyo Iken Co., Ltd.

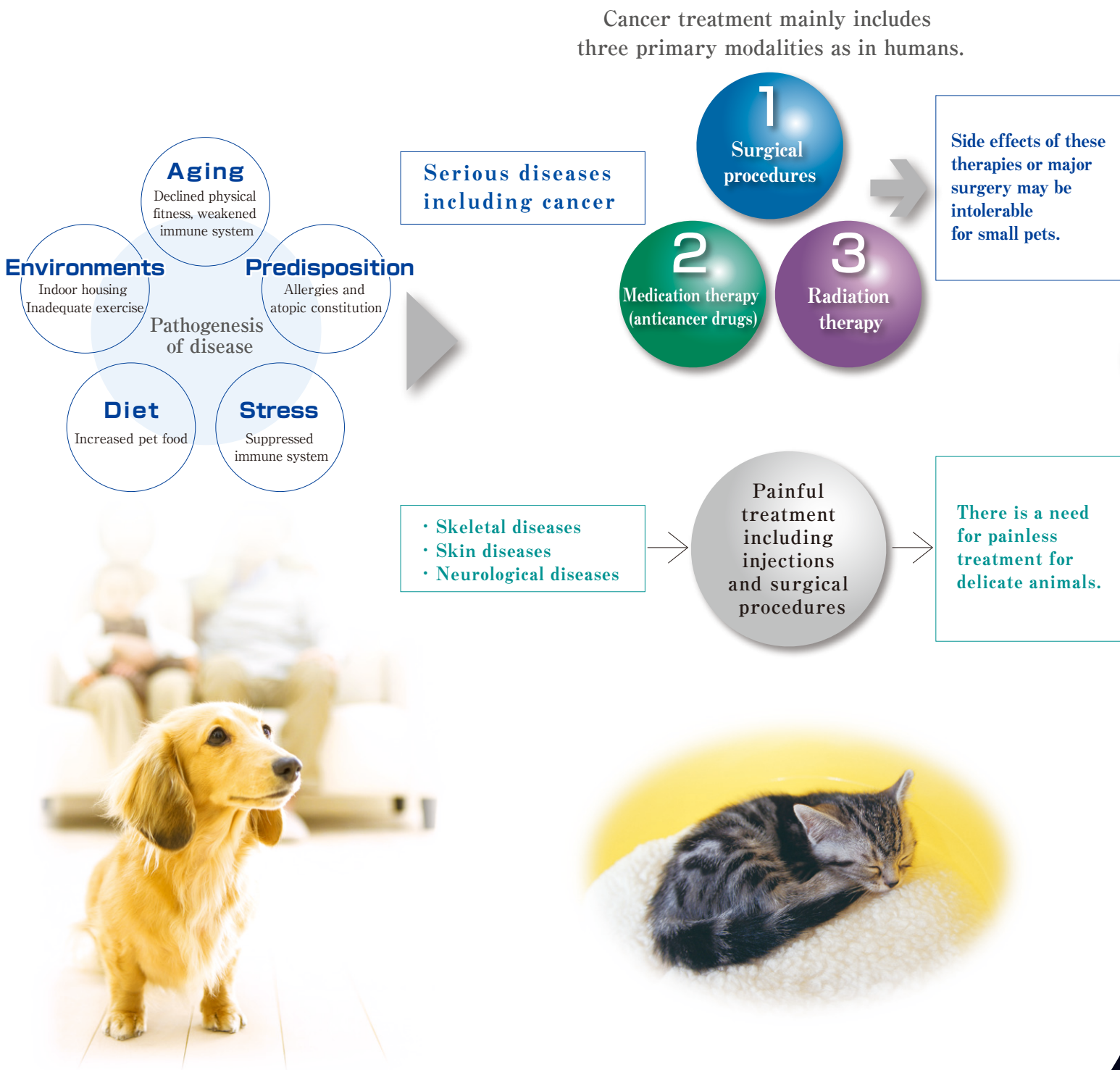
Head Office :  
1131-1 Higashi Naganuma, Inagi, Tokyo 206-0802 Japan Phone +81-42-378-6630 FAX +81-42-378-6614  
Sales Department :  
2-27-2 Yushima Bunkyo-Ku, Tokyo 113-0034 Japan Phone +81-3-5807-3011 FAX +81-3-5807-3012



# Cancer treatment has been an important issue in veterinary medicine



An improved diet and rearing environment have dramatically extended the lives of pets, which have led to the diversification of diseases affecting pets. Almost all diseases common to humans including cancer, heart disease and diabetes are also increasing among pets, and in particular cancer is the leading cause of death amongst pets. Today, cancer treatment is becoming a significant challenge.



## High-power phototherapy with a maximum power of 5,000 mW opens new possibilities for veterinary medicine

“Super Lizer Hyper5000” is a phototherapy device capable of near-infrared focused irradiation with a wavelength (0.6  $\mu\text{m}$  - 1.6  $\mu\text{m}$ ) that penetrates the most deeply into tissues of all phototherapy devices with a high power of 5,000 mW. “Super Lizer” has widely been used in more than 20,000 domestic and overseas facilities for human medical treatment. Now with further increased power, it opens new possibilities for veterinary medicine.



- Features**
- Deeper penetration into body tissues enabled by a high output power with a maximum of 5,000 mW
  - Comfortable warm feeling that no previous low-power lasers have ever provided
  - Safe treatment with few side effects and complications
  - Space-saving compact design
  - Simple operation with user-friendly LED display and buttons



—SUPER LIZER—  
**Hyper 5000**  
A2J